



**Cheshire and Merseyside**

# Performance Review OSC



# Current Performance Reporting

Key Performance Area	Time Period	Performance	C&M	National	Target	Trend
A&E 4 hour Waits, All Types MWLTH from July 23 (Mersey & West Lancashire Teaching Hospital) prev SOHT	Aug-23	71.30%	73.43%	72.98%	76%	
Cancer 2 Week Waits (MWLTH from July 23)	Jul-23	80.34%	82.11%	77.52%	93%	
Cancer 62 Day - Screening (MWLTH from July 23)	Jul-23	70.00%	52.27%	63.29%	90%	
Cancer 31 Day 1st Treatment (MWLTH from July 23)	Jul-23	95.14%	92.52%	91.81%	96%	
RTT - 18 Weeks Incomplete (MWLTH from July 23) snapshot	Jul-23	61.51%	56.11%	58.60%	92%	
C Difficile (Southport & Ormskirk) cumulative YTD	Aug-23	13	-	-	2023-24 Target <=35	
MRSA (Southport & Ormskirk) cumulative YTD	Aug-23	1	-	-	zero tolerance	
Stroke (80% of Pts spending 90% of time on Stroke Unit, Southport & Ormskirk)	Jun-23	73.33%	-	-	80%	<-<- latest data
% TIA assessed and treated within 24 hours (Southport & Ormskirk)	Jun-23	42.86%	-	-	60%	<-<- latest data
Ambulance Category 1 Mean 7 minute response time (NS Place Level)	Aug-23	00:08:14	00:08:03 (NWAAS)	00:08:17	<=7 Minutes	
Ambulance Category 1 90th Percentile 15 minute response time (NS Place Level)	Aug-23	00:15:20	00:13:50 (NWAAS)	00:14:46	<=15 Minutes	
Ambulance Category 2 Mean 18 minute response time (NS Place Level)	Aug-23	00:38:11	00:27:18 (NWAAS)	00:31:30	<=30 Minutes	
Ambulance Category 2 90th Percentile 40 minute response time (NS Place Level)	Aug-23	01:21:51	00:57:48 (NWAAS)	01:07:21	<=40 Minutes	
Ambulance Category 3 90th Percentile 120 minute response time (COG Level)	Aug-23	06:04:19	05:28:22 (NWAAS)	04:09:35	<=120 Minutes	
Ambulance Category 4 90th Percentile 180 minute response time (NS Place Level)	Aug-23	03:14:01	05:35:10 (NWAAS)	05:00:00	<=180 Minutes	
Mental Health: IPT 16.8% Access (NS Place Level)	Aug-23	0.83%	-	-	1.59% per month Qtr 1-3 1.83% per month Qtr 4	
Mental Health: IPT 50% Recovery (NS Place Level)	Aug-23	58.1%	-	-	50%	
Mental Health: IPT waiting <6 weeks (NS Place)	Aug-23	83.0%	-	-	75%	
Mental Health: IPT waiting <18 weeks (NS Place)	Aug-23	98.0%	-	-	95%	

- Example of current reporting pictured
- Current report based on legacy reports pre-Intermediate Care Systems introduced
- Responsibilities for most measures do no longer sit on the historic Clinical Commissioning geographies
- Cheshire & Merseyside ICB responsible for system performance which have been delegated to responsible organisations
  - CMAST – Elective Recovery
  - Cancer Alliance – Cancer waits and performance
  - Transformation Programmes – Mental Health, Diagnostics
  - Urgent & Emergency Care – C&M / Place elements mixed
- Sefton Place teams continue to update on areas no longer responsible for performance management of

Measure	Time Period	Southport & Ormskirk	C&M	National (Target)	Trend
Inpatient – Response Rate	Jul-23	39.4%	35.8%	21.5%	
Inpatient Recommended	Jul-23	95.0%	95.0%	95.0%	
Inpatient Not Recommended	Jul-23	3.0%	2.0%	2.0%	
A&E – Response Rate	Jul-23	27.5%	17.0%	11.1%	
A&E Recommended	Jul-23	85.0%	81.0%	82.0%	
A&E Not Recommended	Jul-23	11.0%	13.0%	12.0%	

Dashboard

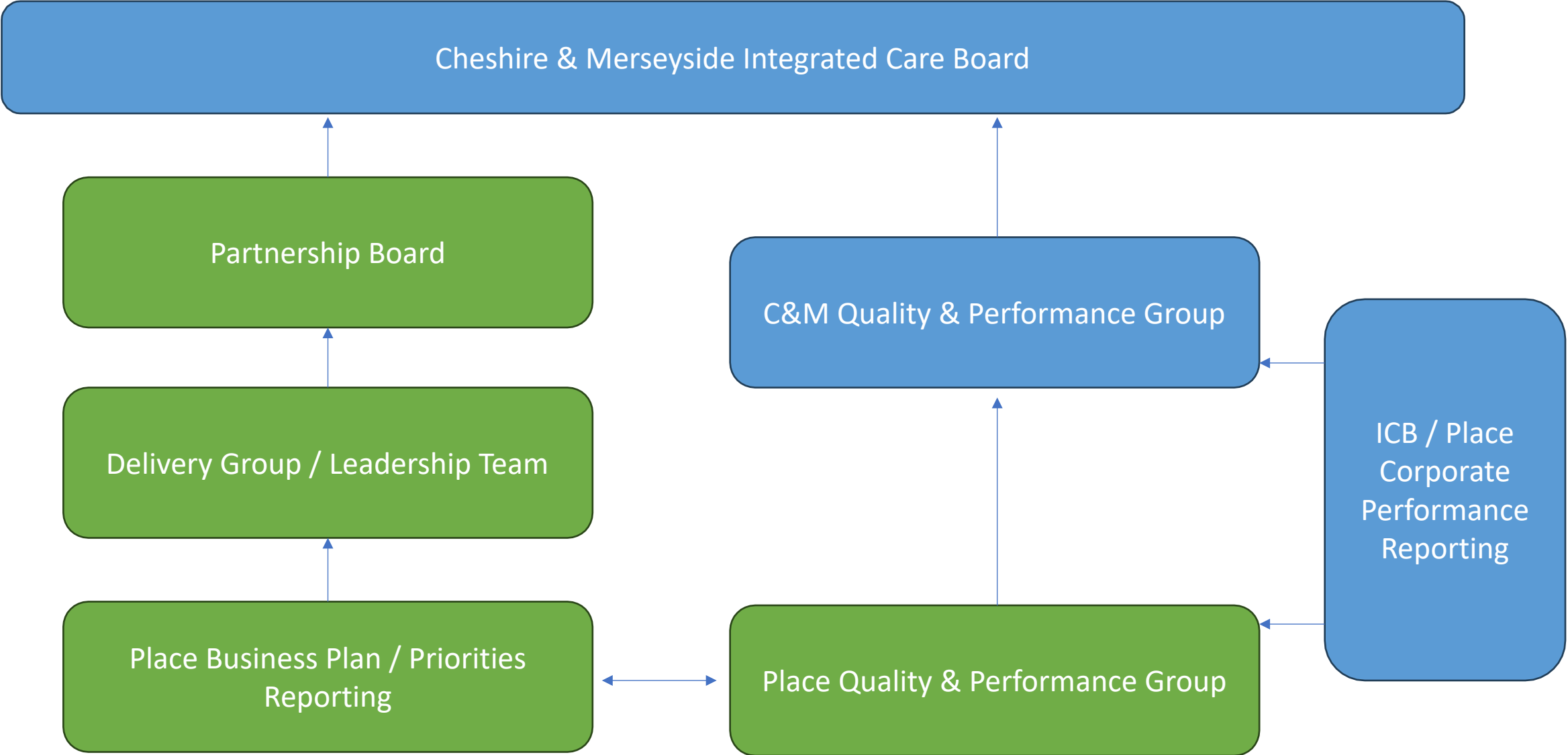
Key Risk Data ▲ Low ▲ Moderate ▲ High  
 ● Published □ Local ● Not available

Aug-23	Cat 1 (Mean)	Cat 2 (Mean)	Cat 3 (90th Percentile)	Cat 4 (90th Percentile)
Target	00:07:00	00:30:00	02:00:00	03:00:00
South Sefton	00:07:45	00:36:36	06:58:58	03:40:29
North Sefton	00:08:14	00:38:11	06:04:19	03:14:01
NWAS	00:08:03	00:27:18	05:28:22	05:35:10
Risk	▲	▲	▲	▲
Data	Published	Published	Published	Published

# Future of Performance Reporting



Cheshire and Merseyside



# Whole Life Sefton Plan Themes



## Start Well.

- Children and Young People.
- Early Help.
- Maternity.



## Live Well.

- Cancer.
- Complex Lives.
- Diagnostics.
- Learning Disabilities and Autism.
- Long Term Conditions.
- Mental Health.
- Planned Care.
- Women's Health.



## Age Well.

- Community Services.
- Dementia.
- Urgent and Emergency Care.



## All Age.

- Carers.
- Obesity.
- Primary Care.
- End of Life.

## To Stop

- Existing reporting to stop - measures picked up within national and ICB corporate reporting (national / ICB reporting accessible via numerous sites, including ICB website: [Meeting and event archive - NHS Cheshire and Merseyside](#))
- Generic quarterly performance update replaced by a more targeted approach as set out below

## To Start

- Legacy reporting to be replaced with Place Business Plan reporting (currently in development)
  - Focus on local Sefton priorities although noting elements will require a system approach e.g. workforce pressures that are impacting upon performance
  - Joint focus with Council and partners
  - Reports to be shared to support development of OSC annual work plan and ensure relevant leads from Sefton and/or C&M can attend to provide an update on identified areas of interest

## To Adapt

- Legacy reporting measures remain relevant to Sefton residents
  - OSC work plan to include scheduled updates from leads across C&M responsible for delivery and performance e.g. ambulance wait times
  - Greater focus on identified areas of interest and to support OSC role